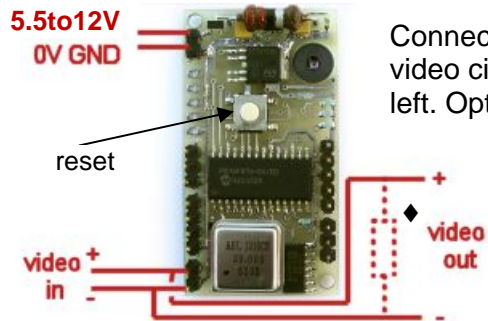
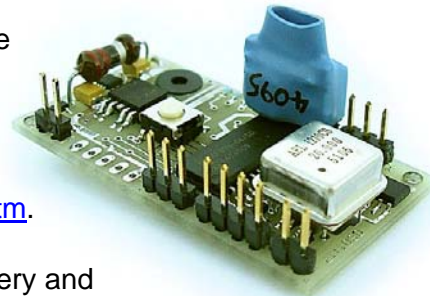




# altiOSD Quick Start

miniature altitude & telemetry collection & display

This manual gets you started with altitude measurements overlaid on an existing video, or as generated video signal, and logging this data to memory. For a full manual of all altiOSD features see [www.gentles.ltd.uk/gentvu/contact.htm](http://www.gentles.ltd.uk/gentvu/contact.htm).

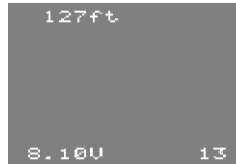


Connect a battery and video circuit as shown on the left. Optionally connect the Logger as above.

A welcome screen will appear on the video, followed by telemetry. If the "video in" is removed the unit automatically generates video itself.

If the Logger is attached it automatically collects data every 10 seconds, adding to data already recorded.

Press the reset button briefly to set the altimeter height to zero, & display the current number of logs recorded. Press the button for >5seconds to enter the configuration mode and reset the Logger. Consult the User Manual for full details of all the user definable functions.



altiOSD internally detects the impedance of the video and if necessary automatically terminates the signal (see ♦ above). To ensure this works correctly connect the monitor/transmitter before power-up.

## Regulatory

This product has been thoroughly assessed & tested as a sub-assembly for safety and EMC emissions, including typical cabling.